

Light efficiency:

42 Lumen/Watt

Light quality:

CRI: 94.8

Color temperature:

4020 K

Output: 2499 lm

Peak: 22853 cd

Power: 59.3 W

PF: 0.98



Tracking number: [n/a](#)

Product name:

ElectraPix Bar 16

Item number:

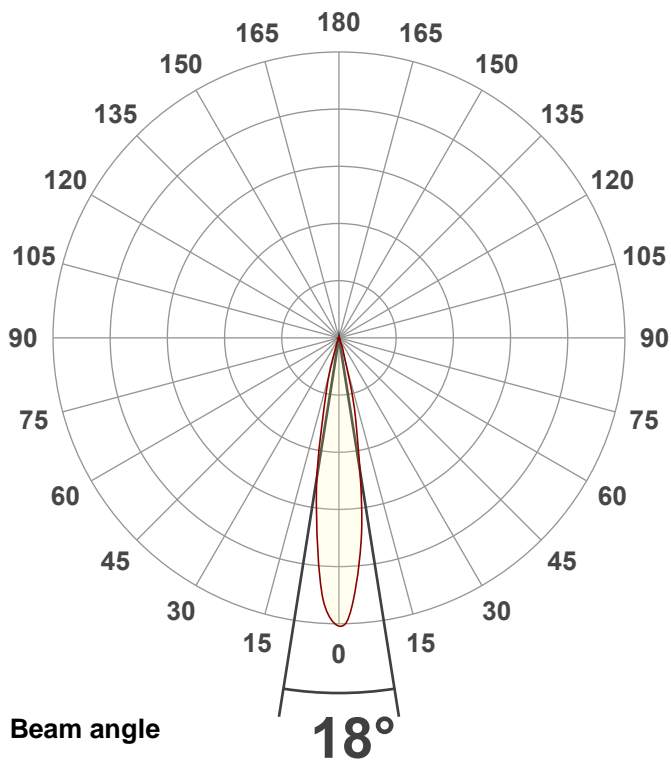
4000K No Diffusion

Date and time:

8/29/2024 4:30:04 PM

Description:

@ 107

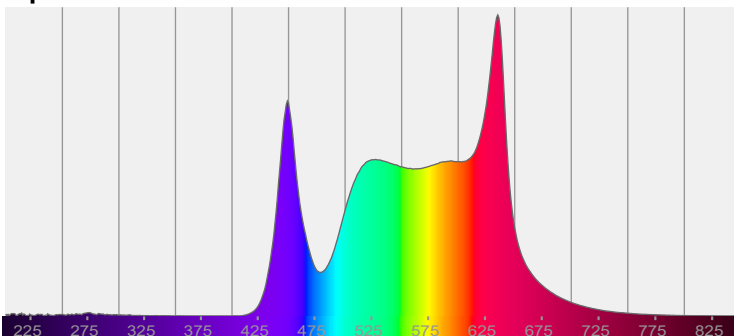


CIE 1931

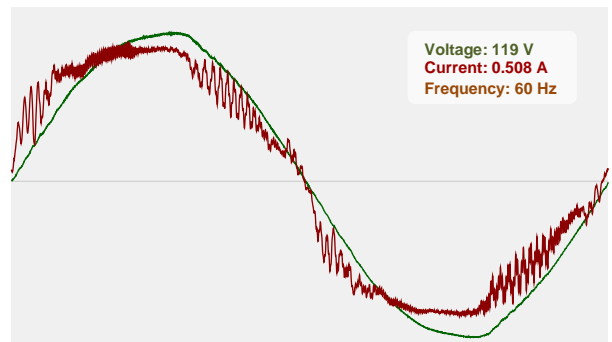
x: 0.380

y: 0.376

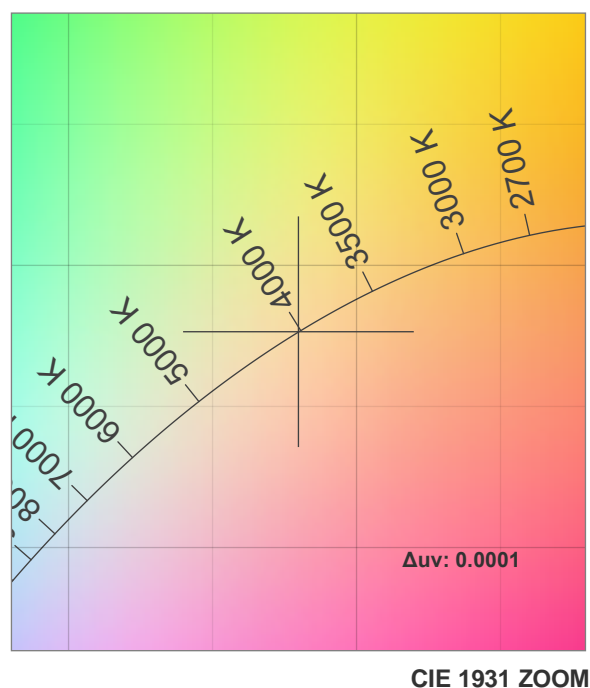
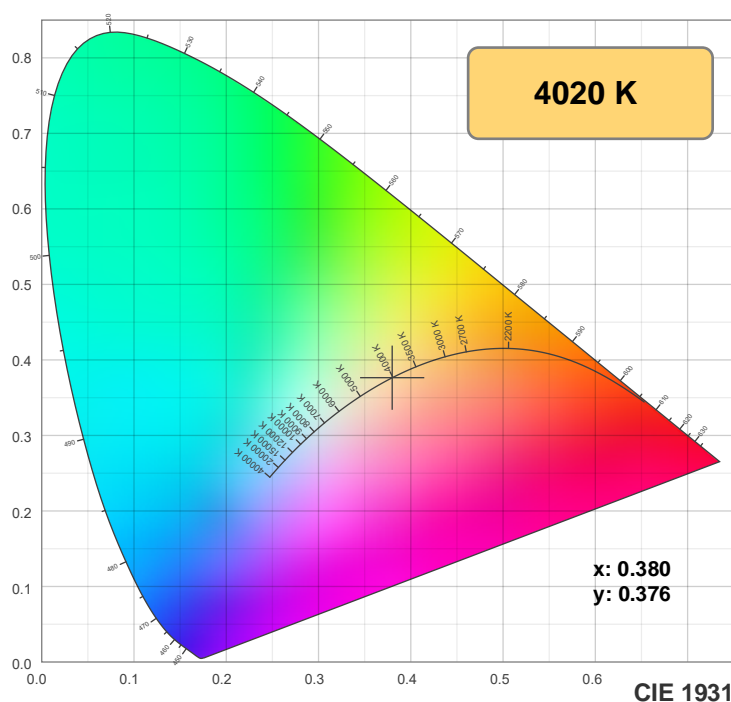
Spectra



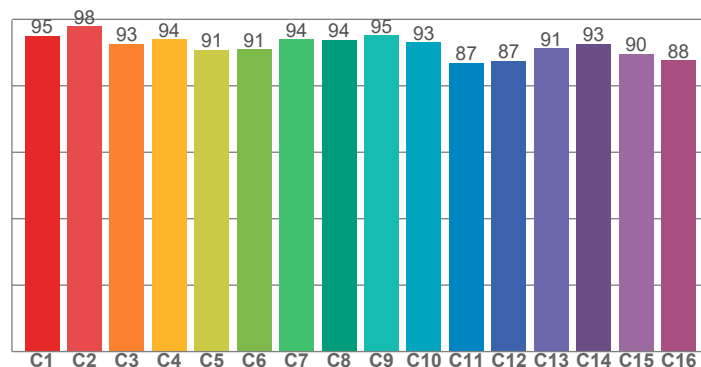
Power



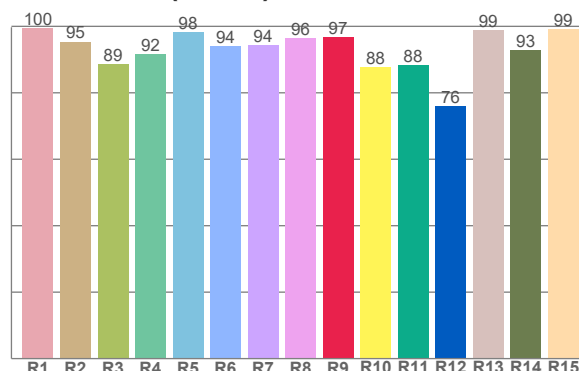
Color details



TM-30: 92.1



CRI: 94.8 (R1-R8)



CRI R values, only R1-R8 are used to calculate final CRI value

R1	R2	R3	R4	R5	R6	R7	R8	R9	R10	R11	R12	R13	R14	R15
99.5	95.4	88.7	91.7	98.1	93.9	94.4	96.5	96.8	87.8	88.3	76.0	98.8	92.7	99.1

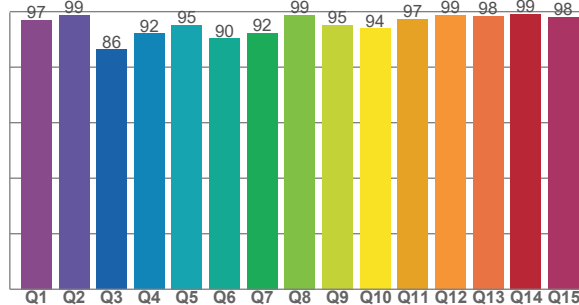
TM30 C values, 16 binned values out of total of 99 C values

C1	C2	C3	C4	C5	C6	C7	C8	C9	C10	C11	C12	C13	C14	C15	C16
95.1	97.9	92.7	93.9	90.8	90.9	93.9	93.9	95.2	93.0	86.9	87.5	91.2	92.7	89.7	87.7

CQS Q values

Q1	Q2	Q3	Q4	Q5	Q6	Q7	Q8	Q9	Q10	Q11	Q12	Q13	Q14	Q15
97.0	98.7	86.3	92.2	95.2	90.4	92.4	98.8	95.2	94.0	97.4	98.8	98.4	99.2	98.1

CQS: 94.2



Color parameters

Color temperature	Color rendering index	Red component	Color fidelity	Color gamut	Color quality scale	Color coordinate cie 1931	Color coordinate cie 1931	Color coordinate	Color coordinate	Color deviation from black body
CCT	CRI	CRI R9	TM30 Rf	TM30 Rg	CQS	x	y	u	v	Δuv
4020 K	94.8	96.8	92.1	104.1	94.2	0.380	0.376	0.225	0.334	0.0001

TM-30 details

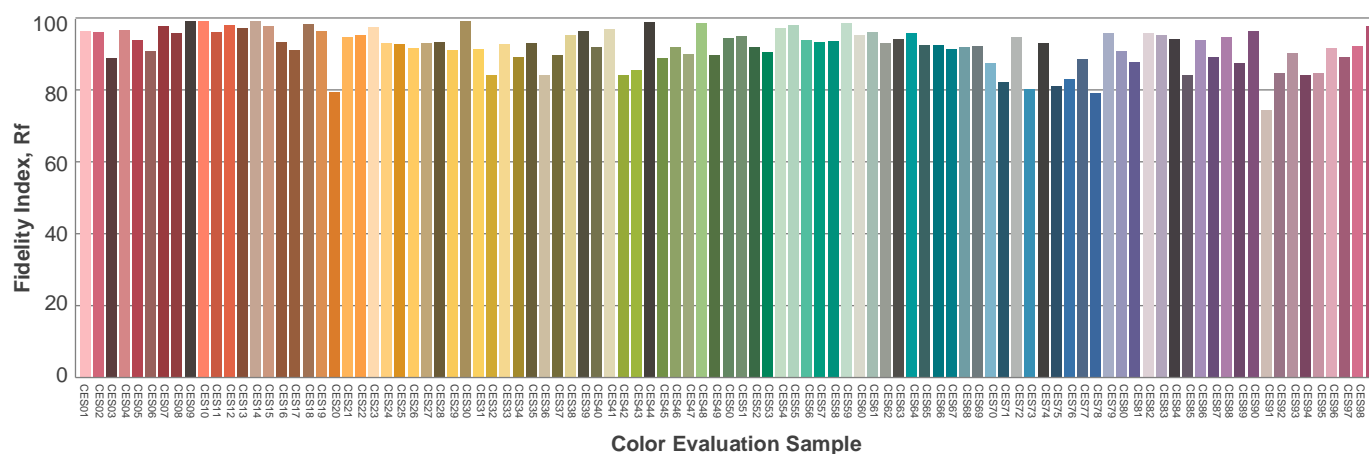
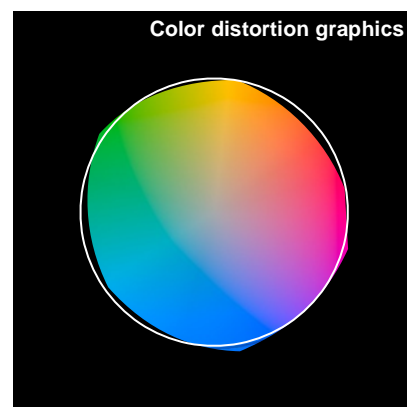
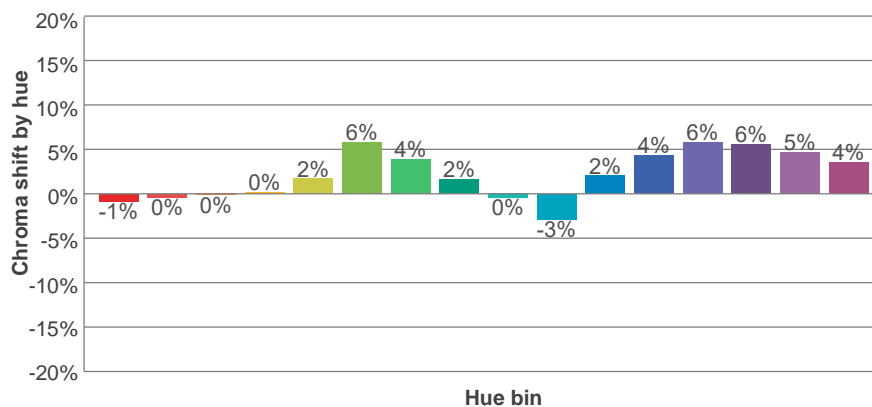
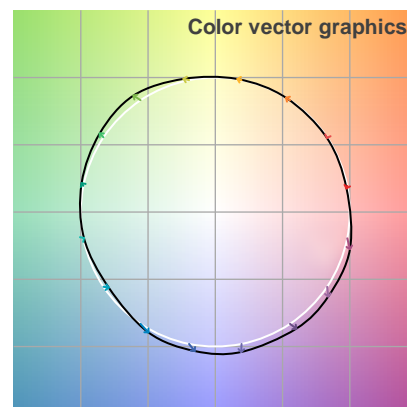
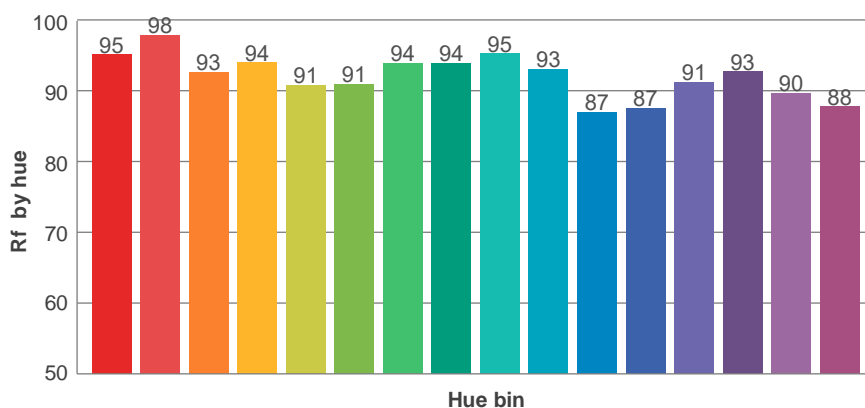
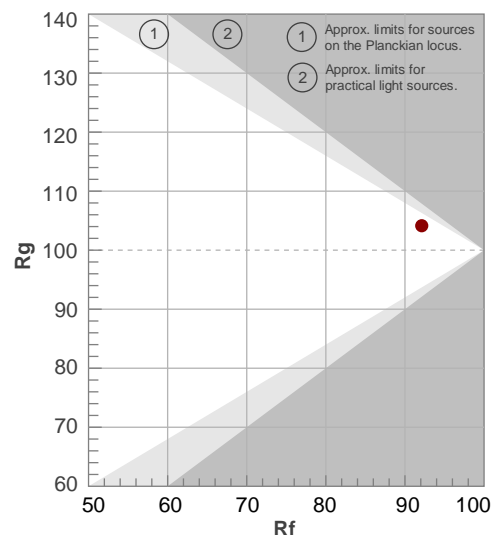
Rf 92.1

Fidelity index Rf

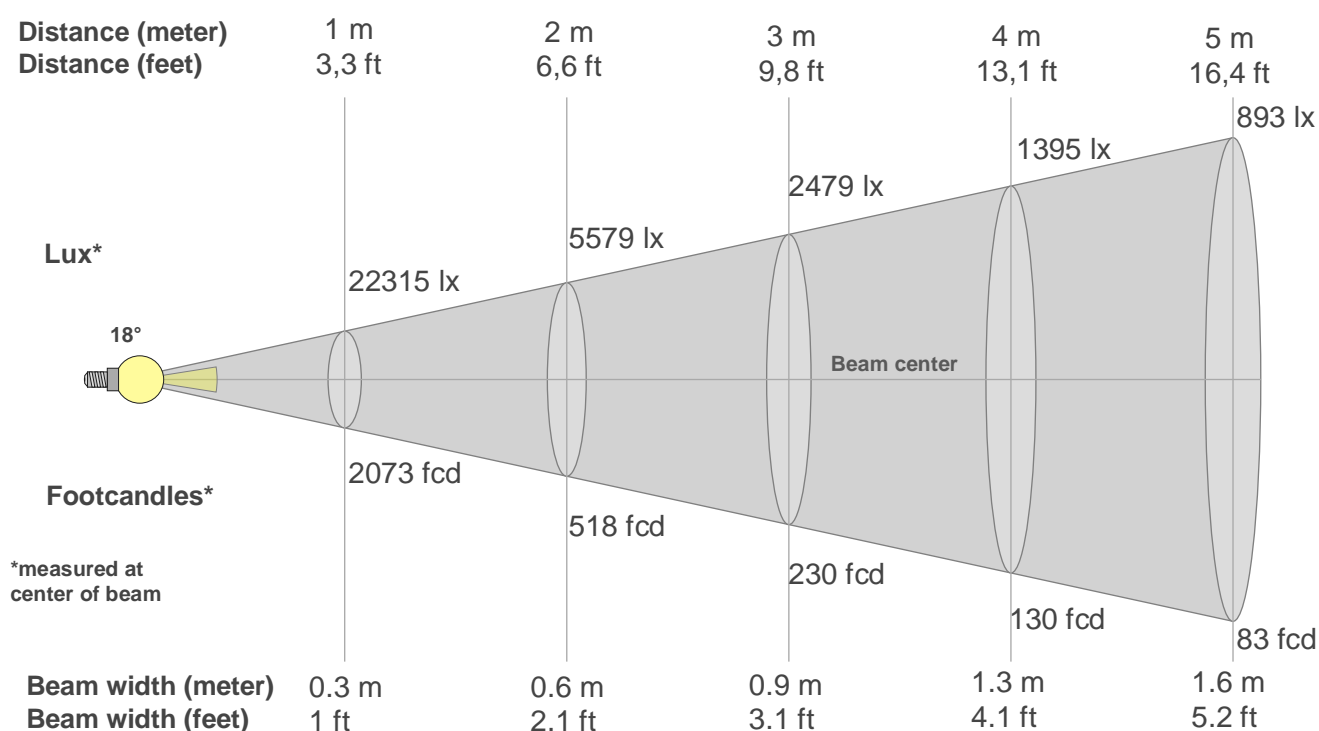
Rg 104.1

Gamut index Rg

Hue Bin	R _f	Shifts (%)	
		Chroma	Hue
1	95	-1%	-2%
2	98	0%	0%
3	93	0%	4%
4	94	0%	3%
5	91	2%	4%
6	91	6%	2%
7	94	4%	-1%
8	94	2%	-2%
9	95	0%	0%
10	93	-3%	3%
11	87	2%	8%
12	87	4%	5%
13	91	6%	-1%
14	93	6%	2%
15	90	5%	-6%
16	88	4%	-7%



Beam details



Beam intensities from 1-20m

1m	2m	3m	4m	5m	6m	7m	8m	9m	10m	11m	12m	13m	14m	15m	16m	17m	18m	19m	20m
3.3ft	6.6ft	9.8ft	13.1ft	16.4ft	19.7ft	23ft	26.2ft	29.5ft	32.8ft	36.1ft	39.4ft	42.7ft	45.9ft	49.2ft	52.5ft	55.8ft	59.1ft	62.3ft	65.6ft
22315lx	5579lx	2479lx	1395lx	893lx	620lx	455lx	349lx	275lx	223lx	184lx	155lx	132lx	114lx	99lx	87lx	77lx	69lx	62lx	56lx
2073.1fcd	518.3fcd	230.3fcd	129.6fcd	82.9fcd	57.6fcd	42.3fcd	32.4fcd	25.6fcd	20.7fcd	17.1fcd	14.4fcd	12.3fcd	10.6fcd	9.2fcd	8.1fcd	7.2fcd	6.4fcd	5.7fcd	5.2fcd

Intensities in 0° c-plane

0°	1°	2°	3°	4°	5°	6°	7°	8°	9°	10°	11°	12°	13°	14°	15°	16°	17°	18°	19°
22.3K	22.7K	22.2K	20.8K	19.5K	18.1K	16.7K	15.1K	13.2K	11.4K	9.6K	7.8K	6.3K	5.2K	4.1K	3.1K	2.0K	1.3K	1.1K	0.9K
100%	102%	100%	93%	87%	81%	75%	68%	59%	51%	43%	35%	28%	23%	19%	14%	9%	6%	5%	4%

Intensities in 90° c-plane

0°	1°	2°	3°	4°	5°	6°	7°	8°	9°	10°	11°	12°	13°	14°	15°	16°	17°	18°	19°
22.3K	22.7K	22.2K	20.8K	19.5K	18.1K	16.7K	15.1K	13.2K	11.4K	9.6K	7.8K	6.3K	5.2K	4.1K	3.1K	2.0K	1.3K	1.1K	0.9K
100%	102%	100%	93%	87%	81%	75%	68%	59%	51%	43%	35%	28%	23%	19%	14%	9%	6%	5%	4%

Intensities in 180° c-plane

0°	1°	2°	3°	4°	5°	6°	7°	8°	9°	10°	11°	12°	13°	14°	15°	16°	17°	18°	19°
22.3K	22.0K	21.6K	21.3K	20.1K	18.4K	16.6K	14.9K	13.1K	11.4K	9.8K	8.2K	6.6K	5.0K	3.9K	3.2K	2.5K	1.8K	1.1K	0.8K
100%	98%	97%	95%	90%	82%	74%	67%	59%	51%	44%	37%	29%	22%	17%	14%	11%	8%	5%	3%

Intensities in 270° c-plane

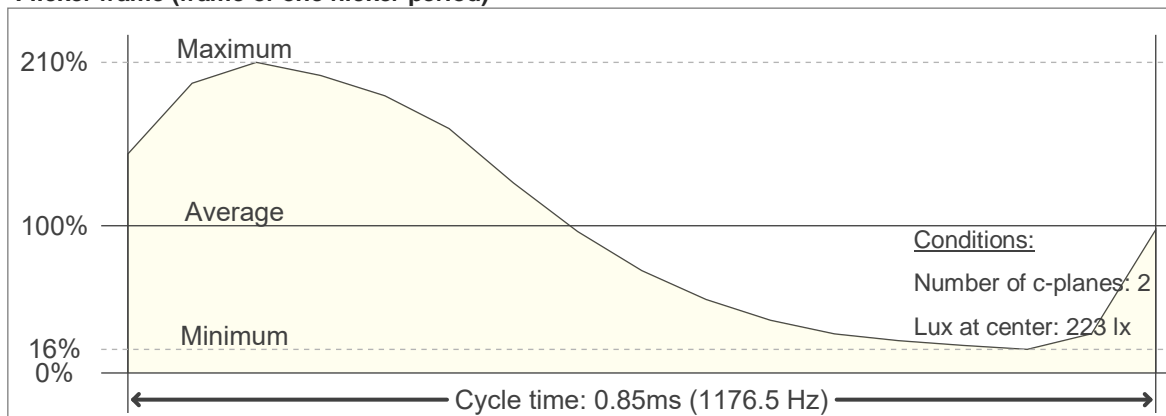
0°	1°	2°	3°	4°	5°	6°	7°	8°	9°	10°	11°	12°	13°	14°	15°	16°	17°	18°	19°
22.3K	22.0K	21.6K	21.3K	20.1K	18.4K	16.6K	14.9K	13.1K	11.4K	9.8K	8.2K	6.6K	5.0K	3.9K	3.2K	2.5K	1.8K	1.1K	0.8K
100%	98%	97%	95%	90%	82%	74%	67%	59%	51%	44%	37%	29%	22%	17%	14%	11%	8%	5%	3%

Beam angle 50%	Field angle 10%	Cutoff angle 2,5%	Intensity ratio in 120° cone	Intensity ratio in 90° cone
18°	32.1°	40.7°	99.9%	98.9%

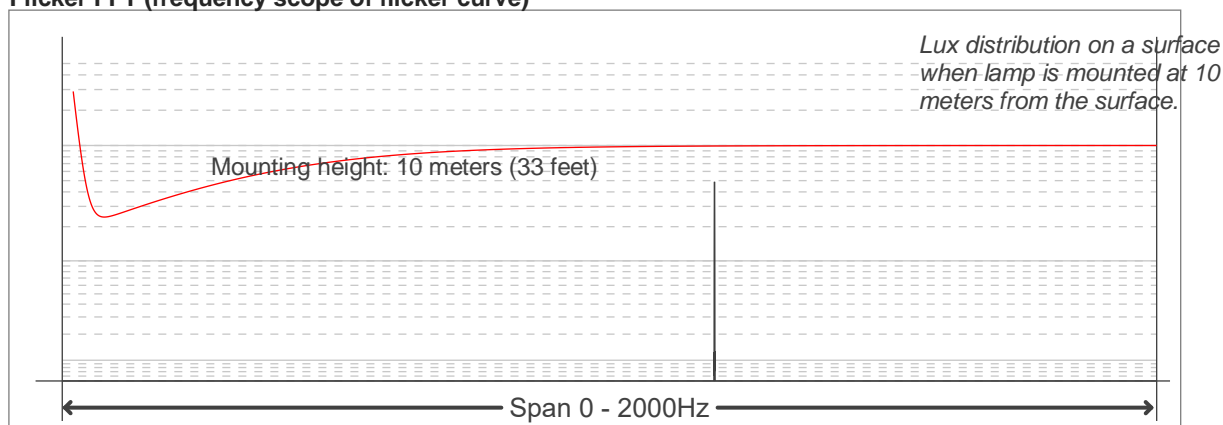
Flicker

Flicker curve (complete sampled flicker signal)

Flicker frame (frame of one flicker period)



Flicker FFT (frequency scope of flicker curve)



Flicker results:

Flicker frequency:		1176.47 Hz	
Flicker index:	0.32	JA8/10 40Hz	0.87 %
Flicker percentage:	86.89 %	JA8/10 90Hz	1.92 %
SVM: (Visual flicker)	0.99	JA8/10 200Hz	4.33 %
PstLM	0.05	JA8/10 400Hz	9.04 %
Mp	0.16	JA8/10 1000Hz	32.4 %

Flicker conditions:

Sample rate:	20000 samples/second
--------------	----------------------